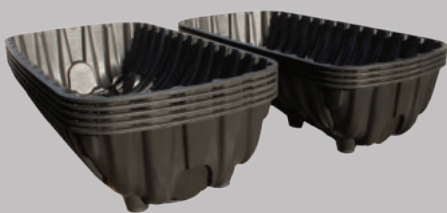


INTEΨA

The
two-part plastic underground tank
for rainwater harvesting and infiltration
that pays off



super flat design,
fits through any door



2,000 litre, connectable



easy to assemble,
easy to retrofit

The two-part plastic underground tank

2,000 litre tank for rainwater harvesting or infiltration



This robust, two-part plastic underground tank is made of environmentally friendly, recycled polypropylene plastic. The tank has three manhole openings in DN200, DN300 and DN400. Unused openings are closed with the caps included in the scope of delivery. In addition, the tank has lateral connection surfaces for pipe connections in DN100. Numerous accessories provide a wide range of application possibilities.



Any sizes

With our coupling set, you simply connect as many tanks as you like to create larger storage volumes.

Unbeatable price

Due to a low tank price, low transport and storage costs (stackable), systems can be created that quickly pay for themselves. In addition, you also save significantly on costs and labour during excavation, as the tanks are very shallow. Combined rainwater harvesting with retention is also ideal, as all the material can then be sent in one delivery, thus eliminating further transport costs.

Very simple assembly

Due to its low weight and flat design, the tank can be installed by hand without heavy equipment.

For rainwater harvesting, the two halves of the tank are sealed with a special adhesive and then screwed together. For infiltration, the tank halves are only screwed together and provided with infiltration openings.

Rainwater for garden irrigation

Our plastic tank is the essential part for your new garden rainwater system. It can easily be inserted into an existing rainwater pipe, as the filter has no height offset between inlet and outlet. It even fits through doors if the garden is behind the house. It is therefore ideal for retrofitting. When watering the garden, you save on drinking water and sewage fees and your plants will love the soft rainwater. A subsequent stormwater infiltration with the same tank elements is also ideal.



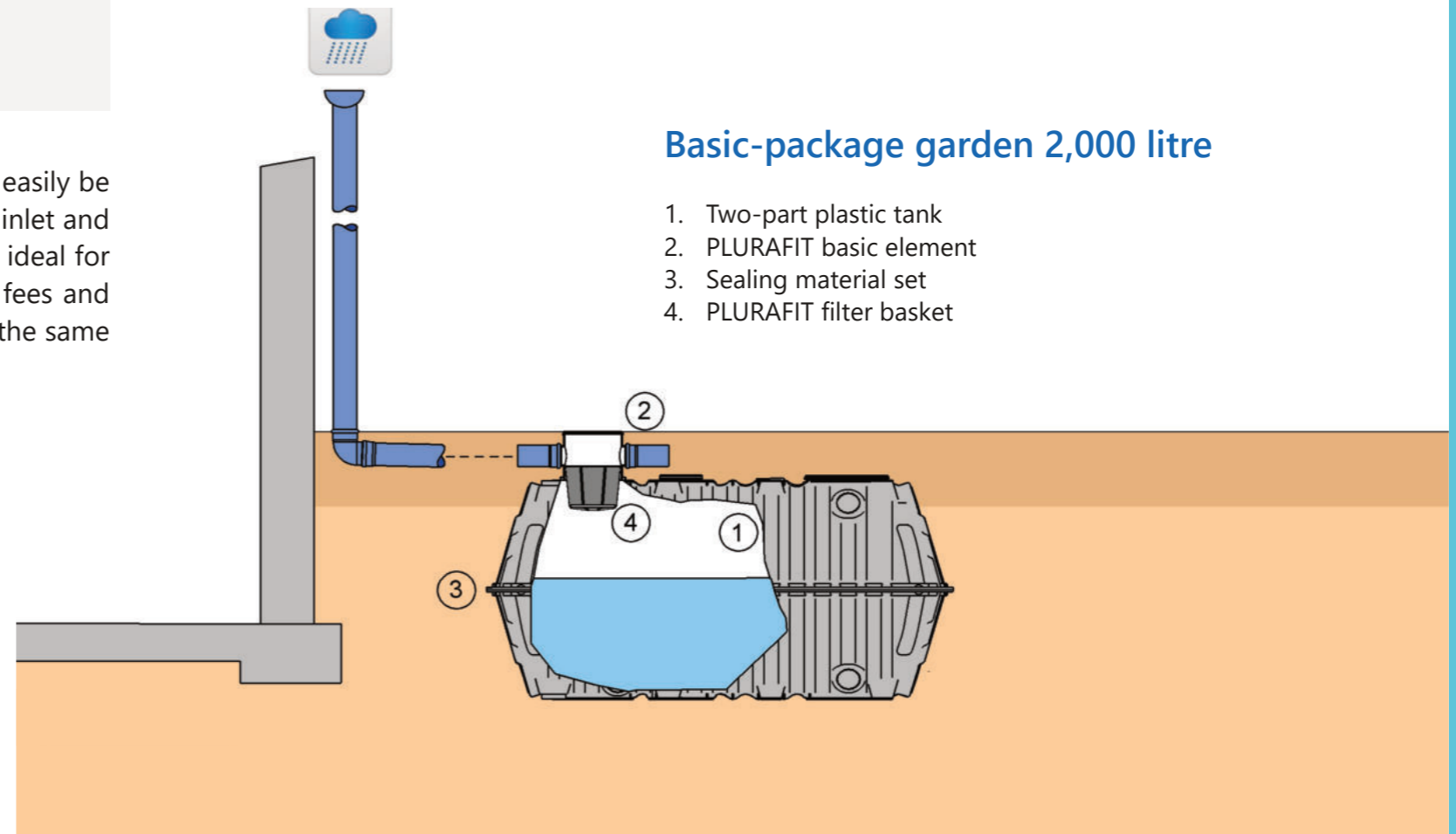
This is how the use of rainwater pays off

For a typical single-family house with a roof area of 100 m², you can collect up to 80 m³ rainwater per year in Germany. Assuming that you collect only 20 m³/year and use it for watering your garden, you will save drinking water and wastewater costs of an average of 5.00 €/m³, you will thus save 100,00 €/ year. With investment costs of approx. 500,00 € your system will have a payback period of only 5 years.

Recommended sizes:

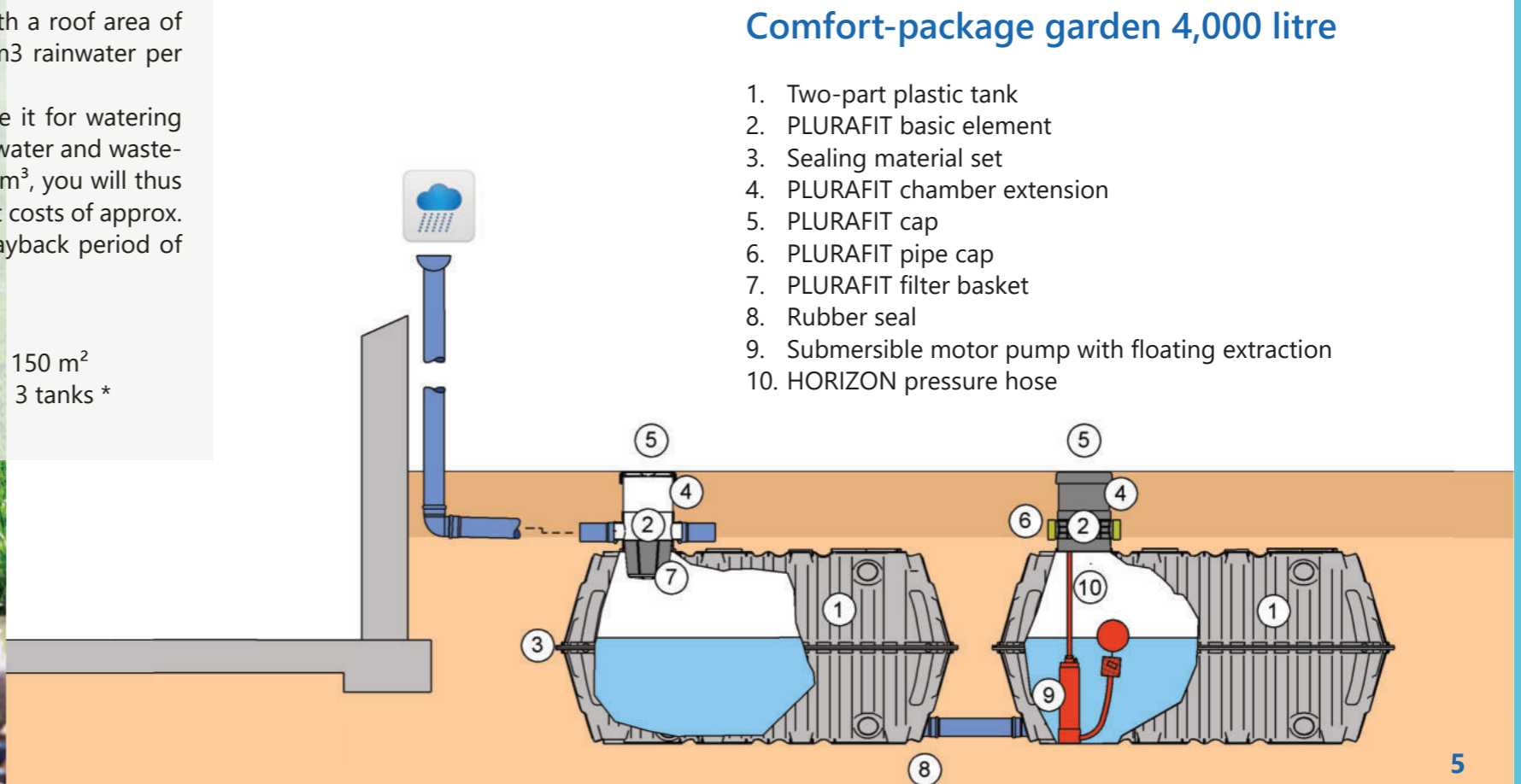
Roof areas:	50 m ²	100 m ²	150 m ²
Cisterne:	1 tank	2 tanks	3 tanks *

*exact dimensioning on the website



Basic-package garden 2,000 litre

1. Two-part plastic tank
2. PLURAFIT basic element
3. Sealing material set
4. PLURAFIT filter basket



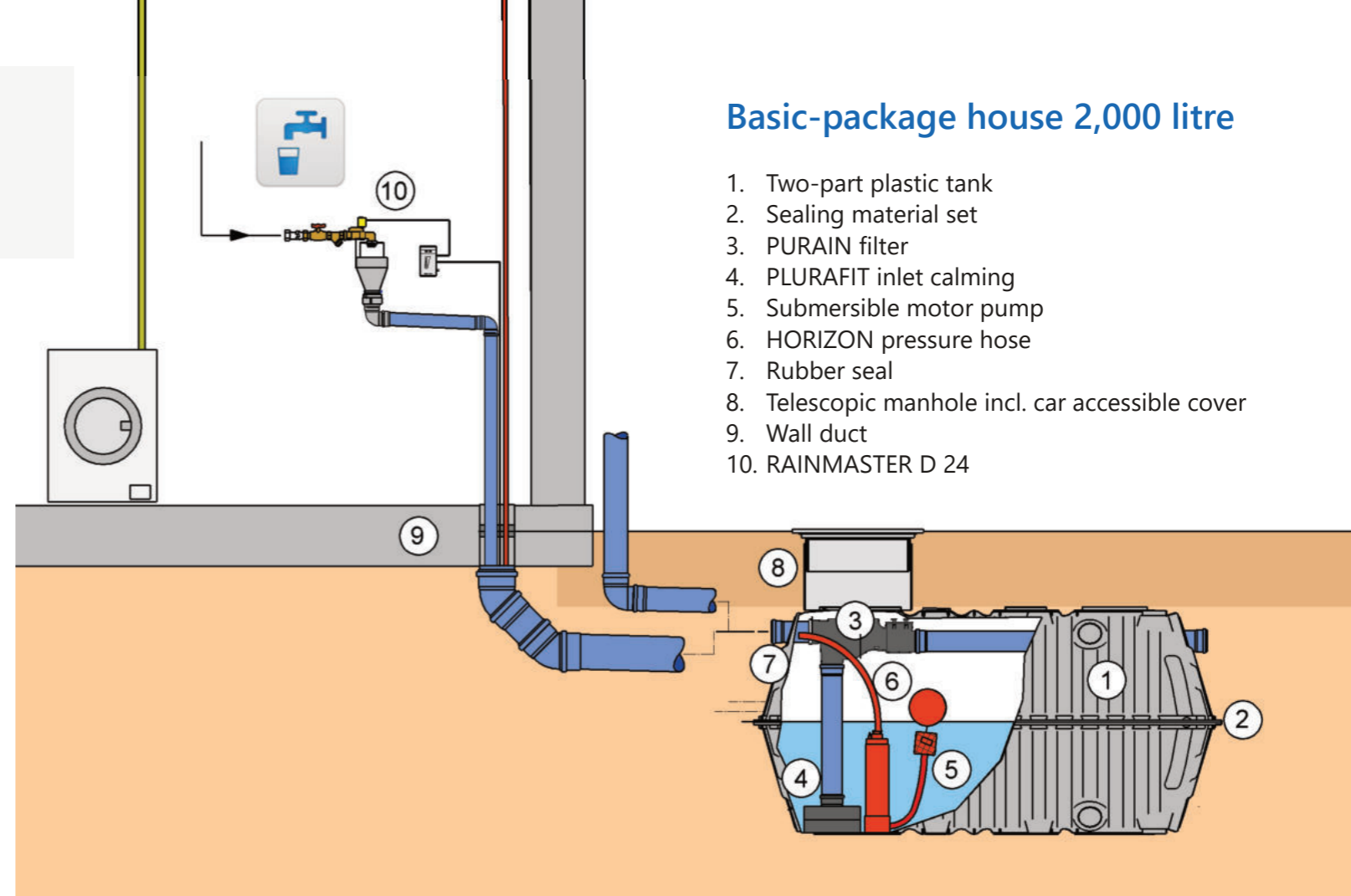
Comfort-package garden 4,000 litre

1. Two-part plastic tank
2. PLURAFIT basic element
3. Sealing material set
4. PLURAFIT chamber extension
5. PLURAFIT cap
6. PLURAFIT pipe cap
7. PLURAFIT filter basket
8. Rubber seal
9. Submersible motor pump with floating extraction
10. HORIZON pressure hose

Rainwater harvesting for residential use

Toilet flushing, washing machine and garden irrigation

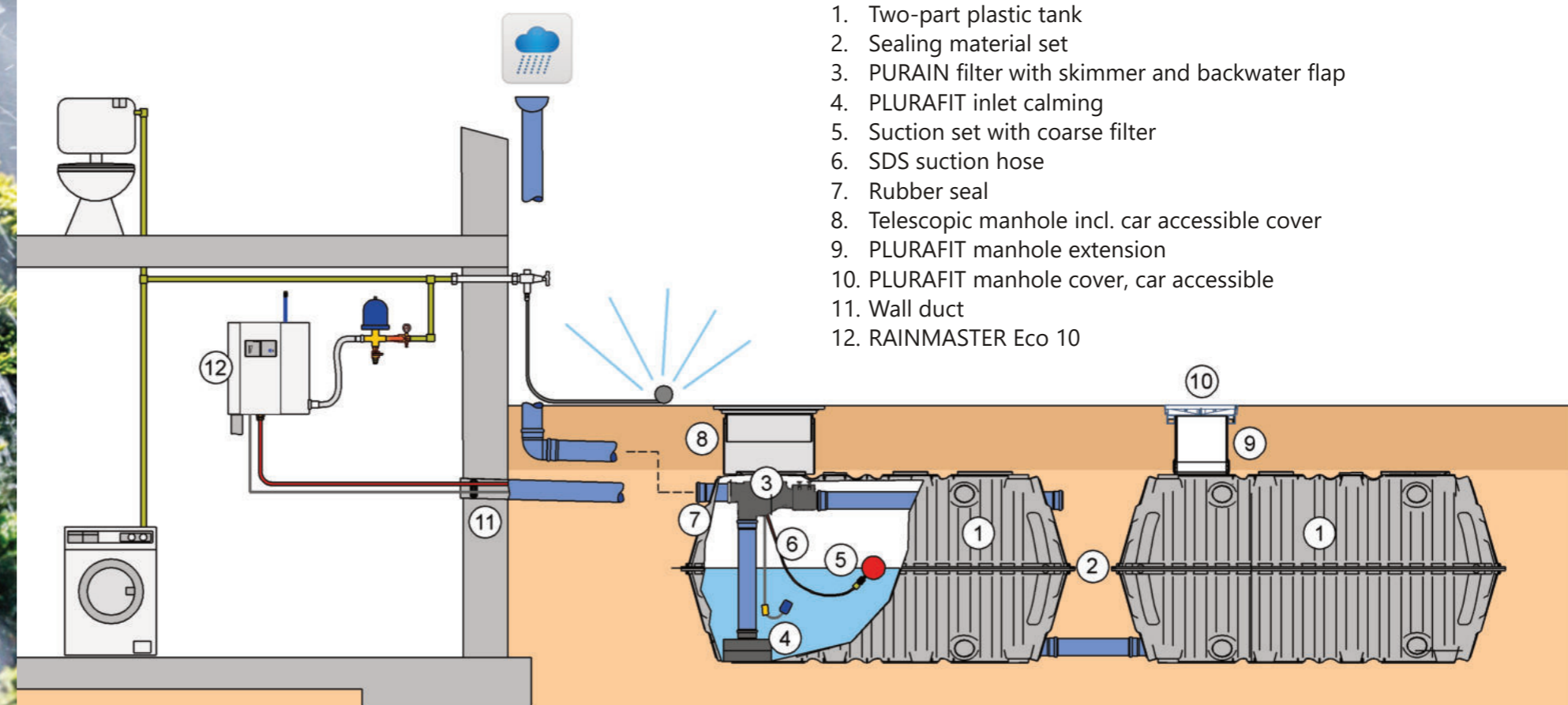
With the PURAIN rainwater filter, the two-part plastic tank becomes an ideal storage tank for rainwater use in the home for flushing toilets, washing machines and watering the garden. You can achieve your desired storage volume by linking as many tanks as you like. Due to the flat tank design, little earthwork is required. With the appropriate installation and cover, the tank is accessible by car and can therefore be placed in the driveway, for example.



Basic-package house 2,000 litre

1. Two-part plastic tank
2. Sealing material set
3. PURAIN filter
4. PLURAFIT inlet calming
5. Submersible motor pump
6. HORIZON pressure hose
7. Rubber seal
8. Telescopic manhole incl. car accessible cover
9. Wall duct
10. RAINMASTER D 24

Comfort-package house 4,000 litre



1. Two-part plastic tank
2. Sealing material set
3. PURAIN filter with skimmer and backwater flap
4. PLURAFIT inlet calming
5. Suction set with coarse filter
6. SDS suction hose
7. Rubber seal
8. Telescopic manhole incl. car accessible cover
9. PLURAFIT manhole extension
10. PLURAFIT manhole cover, car accessible
11. Wall duct
12. RAINMASTER Eco 10

Stormwater infiltration

The tank can also be used as a rainwater infiltration system. For this purpose, the tank halves are simply perforated with holes according to a predefined plan and covered with a geotextile. A further filter shaft is not required, as this is already integrated in the tank. The filter basket serves as a pre-filter, which protects the infiltration trench and is easy to maintain.



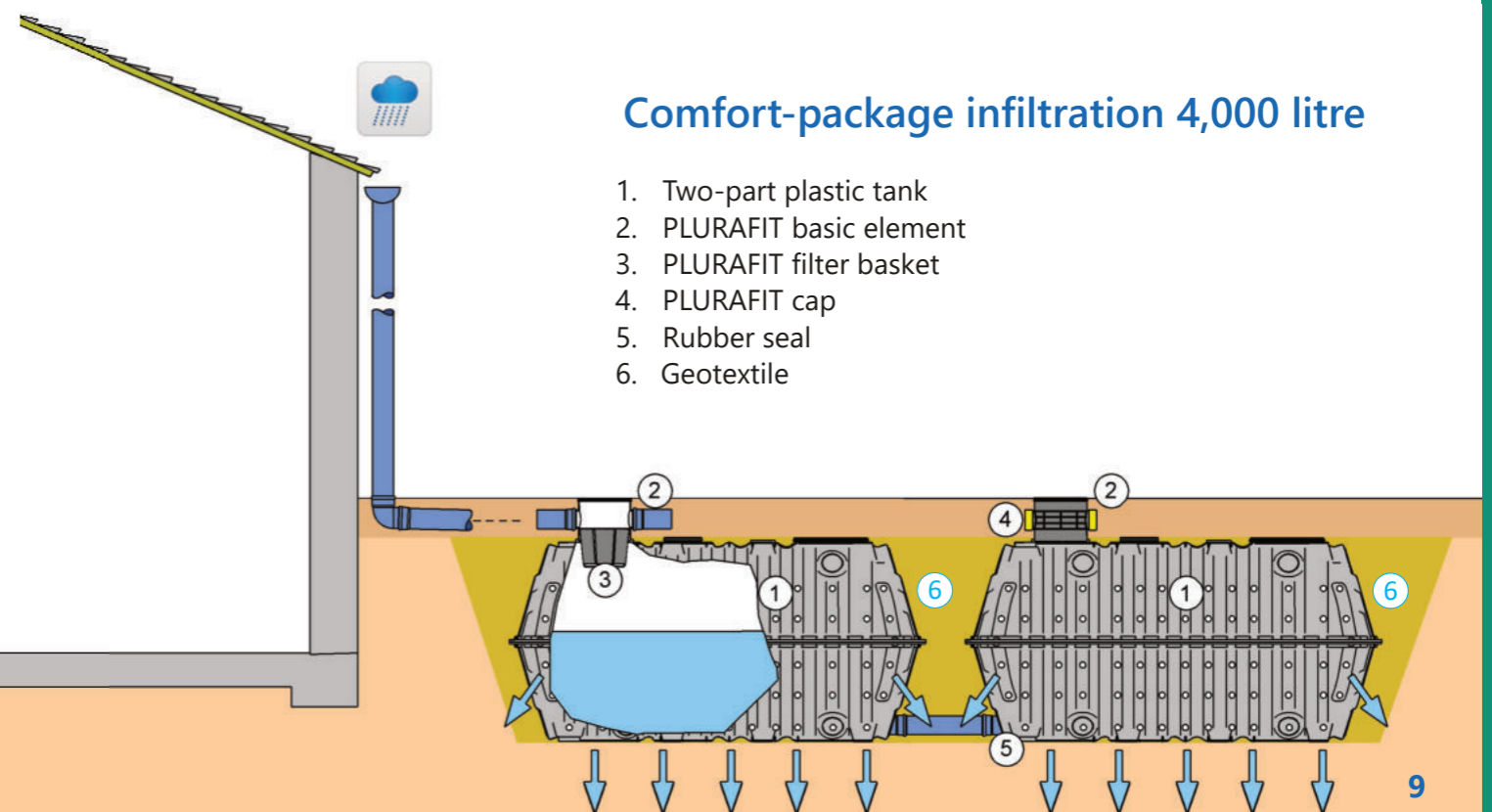
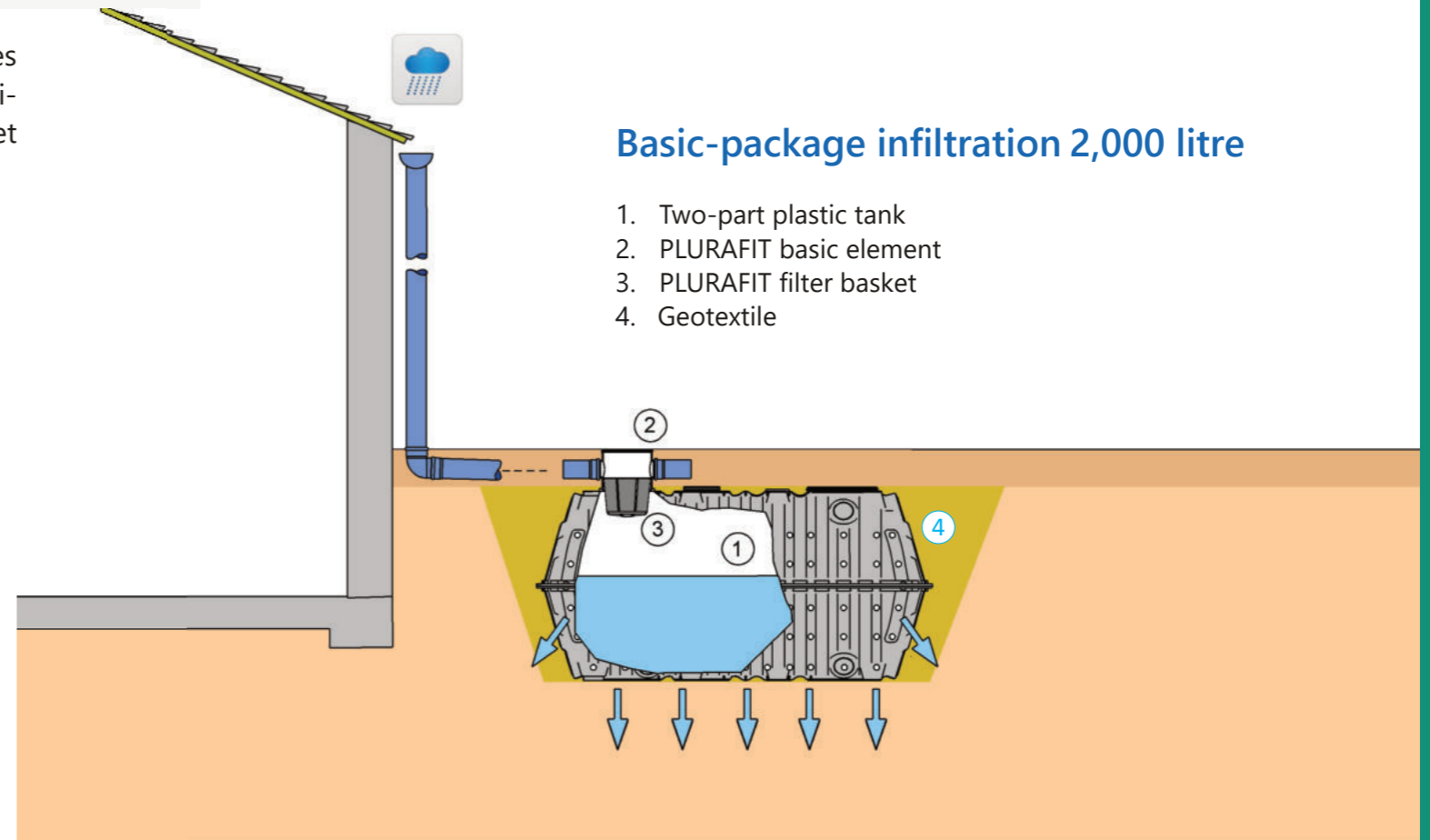
This is how the infiltration of rainwater becomes profitable

With the implementation of the so-called „fee splitting“, your sealed surface is subject to a tax of more than 1,00 € /m². You can exempt yourself from this by installing your own infiltration tank. If you combine the infiltration with your rainwater tank, you also save on pre-filtration. With a roof area of 150 m² and 1,00 € / m² sealed area, you save 150,00 € / year. A typical system has payback period of less than 4 years.

Recommended tank sizes

Roof areas:	50 m ²	100 m ²	150 m ²
Cisterne:	1 tank	2 tanks	3 tanks *

*exact dimensioning on the website

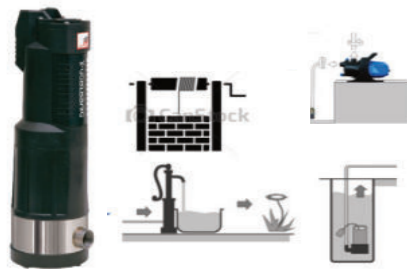


System components plastic underground tank



Pre-filter

The filter basket, a filter sieve and alternatively a trapezoidal sieve are available from the accessories as filter inserts for the PLURAFIT chamber. If you want to connect an infiltration tank downstream, we recommend the filter basket to collect the dirt.



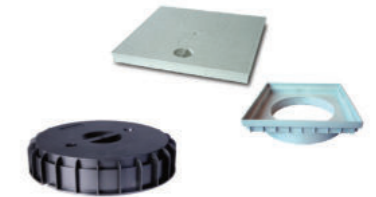
Withdrawal

The water can be extracted from the tank in a variety of ways, such as by bucket via a well opening above the dome chamber, via a swing pump* or a portable garden pump* up to the MULTI submersible pump with integrated control.

*You can find these components in the trade

Caps

Instead of the simple cover cap included in the basic package, we recommend the PLURAFIT cap if the manhole is to be accessible or the PLURAFIT manhole cover for car accessibility.



Coupling

With the rubber seals, you can couple as many additional storage tanks as you wish and thus create your desired volume. As all storage tanks are delivered on one pallet, there are no additional transport costs.



Drill

The holes for the rubber seal are drilled with the Ø127mm hole circle drill. The tank has several flat connection surfaces for this. Use the milling drill to drill the infiltration holes in the tank.



		PLURAFIT Basic element	Sealing kit	PLURAFIT manhole extension	PLURAFIT cap	PLURAFIT filter basket	Rubber seal	Pressure hose	Submersible motor pump	PURAIN filter	PLURAFIT inlet calming	Telescopic dome incl. cap	PLURAFIT manhole cover	RAIN-MASTER D24	RAIN-MASTER Eco	Suction hose	Suction set	Geotextile fleece
Rainwater harvesting Garden	Basic	✓	✓			✓												
	Comfort	✓	✓	✓	✓	✓	✓	✓	✓									
Rainwater harvesting House	Basic		✓				✓	✓	✓	✓	✓	✓		✓				
	Comfort		✓	✓			✓			✓	✓	✓	✓		✓	✓	✓	
Stormwater infiltration	Basic	✓				✓												✓
	Comfort	✓			✓	✓	✓											✓

INTEWA GmbH

Auf der Hüls 182
52068 Aachen
Germany

Phone: +49 (0)241 96605 0

Fax: +49 (0)241 96605 10

www.intewa.com

info@intewa.de

